

C-2023FI | C-3023FI

Premium Soybean Seed Treatments

Win the Start

Win from the start with **C-2023FI** and **C-3023FI** soybean seed treatment, featuring industry-leading Lumisena® fungicide seed treatment that provides best-in-class protection against Phytophthora.

Win the Season With:



More modes of action against early season diseases



Control against key insects and pests



Strong, healthy plant stands and improved vigor

Robust Fungicide Package

Lumisena®

FUNGICIDE SEED TREATMENT

Protect your genetic investment with soybean seed treatments that feature **more modes of action** against top yield-robbing diseases: *phytophthora*, *pythium*, *rhizoctonia*, *fusarium*, and *phomopsis*.

Potential yield benefit

+4 bu/A Yield Advantage
in field areas with higher phytophthora susceptibility*

+1 bu/A Yield Advantage
across the farm

Multiple Modes Of Action Against Key Diseases

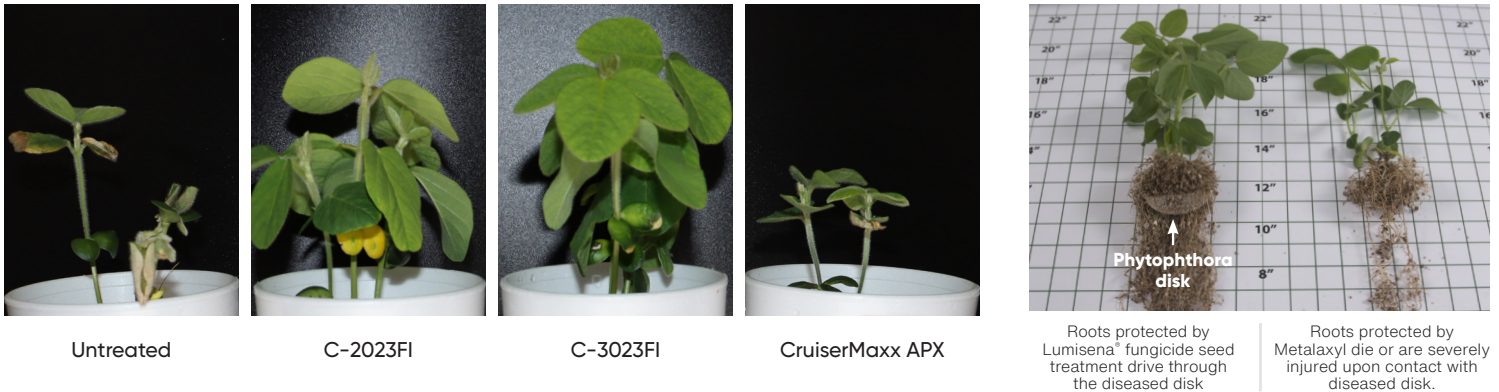
		Phytophthora	Pythium	Rhizoctonia	Fusarium	Phomopsis
Brand Name	Active ingredient					
C-2023FI	Lumisena	Oxathiapiprolin	1			
	Lumiflex® seed treatment fungicide	Ipconazole		1	1	1
		Picoxystrobin		1	1	1
		Mefenoxam	1	1		
	Phalanx™ insecticide seed treatment	Thiamethoxam				
Number of Modes of Action		2	2	2	2	1
C-3023FI	Lumisena	Oxathiapiprolin	1			
	Lumiflex	Ipconazole		1	1	1
		Picoxystrobin		1	1	1
		Mefenoxam	1	1		
	Lumiante™ fungicide seed treatment	Ethaboxam	1	1		
Phalanx	Thiamethoxam					
Number of Modes of Action		3	3	2	2	1

*Data is based on 638 head-to-head comparisons between Lumisena® fungicide seed treatment (0.568 fl oz/cwt) and MetalaxyI (0.75 fl oz/cwt) in the top soybean-producing states through Dec. 12, 2017. Comparisons were made utilizing the same soybean variety.



Best-in-Class Protection Against Phytophthora

Disease control and performance with Lumisena® fungicide seed treatment in Phytophthora inoculated soil cups.



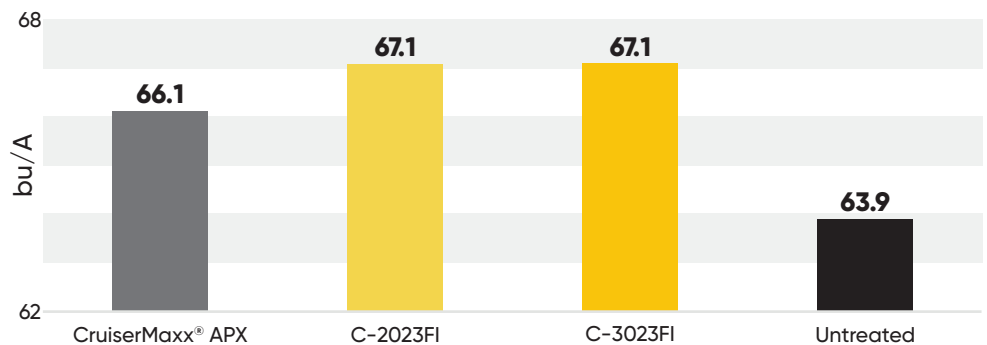
Win More With The Corteva Agriscience™ Soybean Seed Treatment Portfolio

Broad-Spectrum Insect Control

Protect plant health and seedlings against a range of crop-damaging insect pests with Phalanx™ during the most vulnerable growing period.

- Aphids
- Bean leaf beetle
- Grape Colaspis
- White Grubs
- Leafhoppers
- Wireworm
- Thrips
- Seed corn maggot

2023 Replicated Data | 33 US Locations



Application Rates:

	Use rate:		Units:			Density: (lbs/gal)
	CWT	140K seed	gallon	15 gallon keg:	30 gallon keg:	
C-2023FI	3.6	1.8	71.1	1,066	2,133	9.39
C-3023FI	3.9	1.95	65.6	985	1,969	9.38

For more information on C-2023FI or C-3023FI, please contact your local Corteva Agriscience territory manager or call **800-258-3033**.

Lumisena®
FUNGICIDE SEED TREATMENT

Lumiflex®
SEED TREATMENT FUNGICIDE

Lumiante®
FUNGICIDE SEED TREATMENT

Phalanx™
INSECTICIDE SEED TREATMENT

Visit us at corteva.us

®™ Trademarks of Corteva Agriscience and its affiliated companies.

This reference guide is not intended as a substitute for the product label for the product(s) referenced herein. Product labels for the above product(s) contain important precautions, directions for use, and product warranty and liability limitations, which must be read before using the product(s). Applicators must be in possession of the product label(s) at the time of application. Always read and follow all label direction and precautions for use when using any pesticide alone or in tank-mix combinations.

The foregoing is provided for informational use only. Please contact your Corteva sales professional for information and suggestions specific to your operation. Product performance is variable and depends on many factors such as moisture and heat stress, soil type, management practices and environmental stress as well as disease and pest pressures. Individual results may vary. Not all products are registered for sale or use in all states. Contact your state pesticide regulatory agency to determine if a product is registered for sale or use in your state. CruiserMaxx, Vibrance is a trademark of a Syngenta Group Company. Always read and follow label directions.
©2024 Corteva. 020866 COR (6/24)

