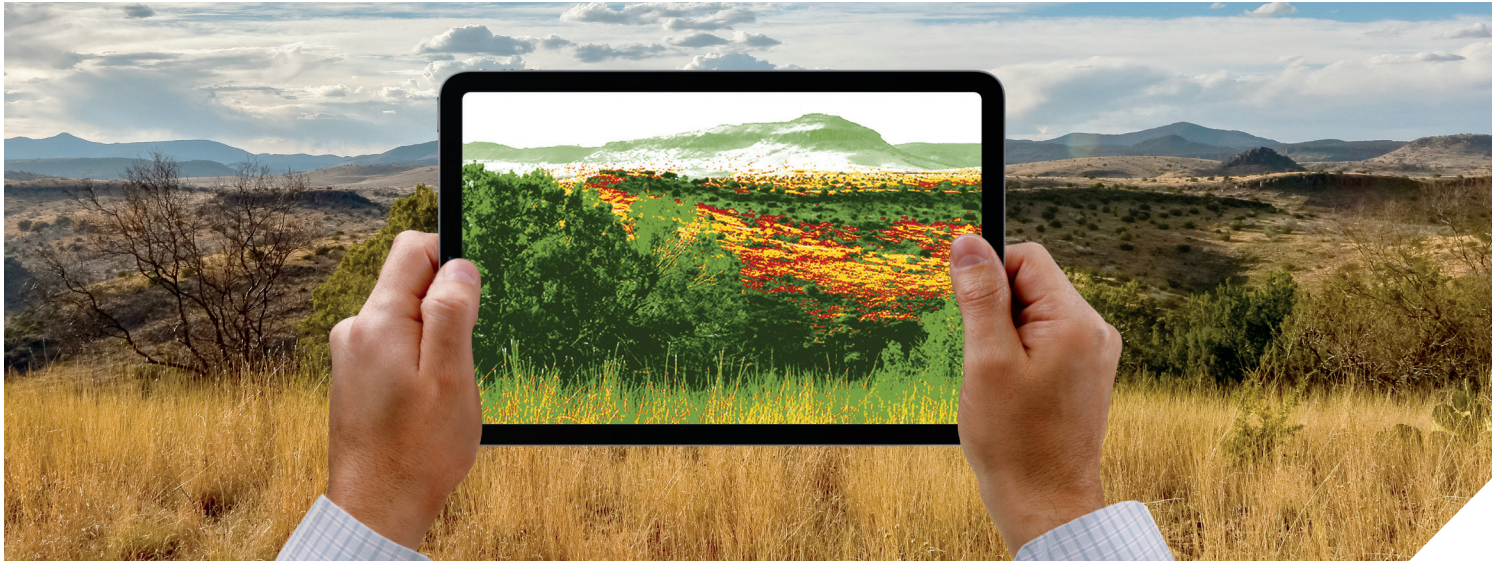




LandVisor® Advanced Brush Management Canopy Reduction vs. Root Kill



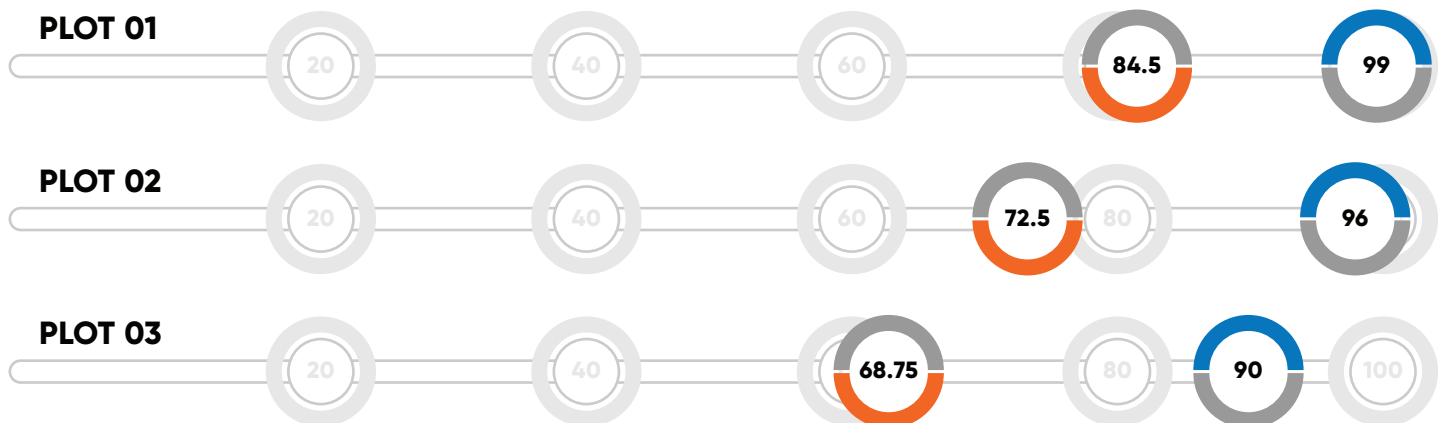
You know your land, but you've never known it like you can with LandVisor® Advanced Brush Management.

Avid hunters know while hunting, the objective is to execute a good shot so they have meat to bring home to their family and perhaps even a trophy. Executing a bad shot that only wounds the animal is far from the objective. The same thought process can be applied when it comes to your brush management herbicide program.

In recent years, there has been much discussion surrounding the measurement of brush management herbicide effectiveness. Both canopy reduction and root kill provide value from a habitat improvement and grass response standpoint but can result in a completely different outcome.

A common observation when looking at both within the same project area is that higher mortality (root kill) leads to improved canopy reduction. Inversely, canopy reduction is not always an accurate indicator of root kill. Where they differ quite drastically is the subjectiveness and variability of that measure. Case in point is a research trial where both canopy reduction and mortality were measured. As you can see from the chart below, 90% canopy reduction can equate to a high level of root kill variability.

CANOPY REDUCTION VS MORTALITY



All plots resulted in a 90% reduction in canopy but ranged from 69-85% control or mortality.

Texas GLC/Corteva Huisache Program Approach Trials - Victoria, Refugio and Bee County Texas, sprayed November 2019, September 2020 and November 2021. Mortality and Canopy Reduction was measured at 2 years after the last treatment.

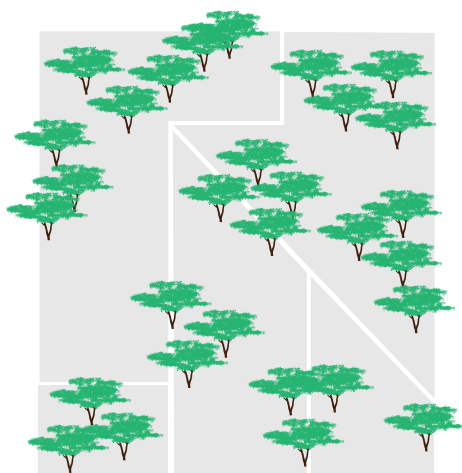


Following herbicide treatment, trees with any remaining green leaf material have the potential to recover and survive.

Canopy reduction measurements can sometimes be very subjective. After all, you can have a tree with a flag but if your canopy reduction transect does not intersect with the flagging limb, your canopy reduction measure for a live tree is 100%.

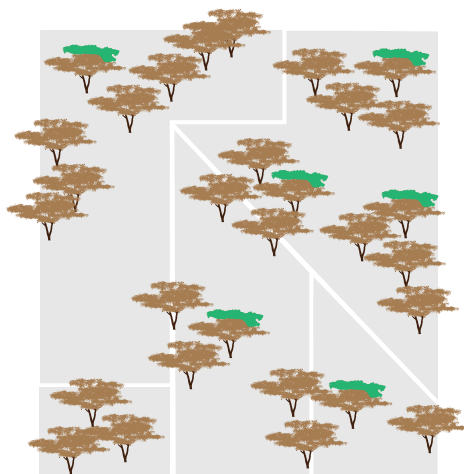
This relationship is why canopy reduction can be so variable.

The following illustration shows that it is very possible for a site to have 90% canopy reduction with only 50% root kill.



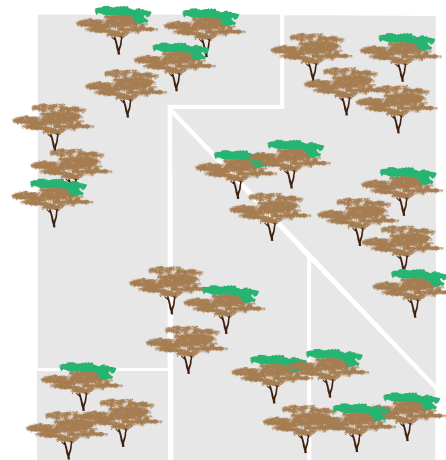
35% Total Canopy

Given the number of trees and their canopy, 35% of this pasture is covered by mesquite canopy.



95% Canopy Reduction with 75% Mortality

By use of herbicide, this pasture received a 95% reduction in overall canopy. With this canopy reduction, 75% mortality was achieved meaning those trees are dead and are not expected to resprout.



95% Canopy Reduction with 50% Mortality

By use of herbicide, this pasture received a 95% reduction in canopy but only 50% total mortality. As time continues, at least 50% of those mesquite trees would be expected to survive.

With the LandVisor® Advanced Brush Management System, you receive targeted site selection as well as targeted application timing leading to improved, more consistent root kill - all backed by a Corteva Service Policy.

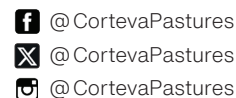
Equipped with treatment packages and herbicides that give the greatest level of use flexibility, LandVisor Advanced Brush Management System allows you to reach your brush management goals effectively & efficiently.



If you are interested in learning more about LandVisor® Advanced Brush Management, visit landvisor.us and **request a live demo** with a Certified LandVisor Consultant on your operation.



To find your local Corteva Range and Pasture Specialist visit rangeandpasture.com/specialist



Visit us at rangeandpasture.com

™ Trademarks of Corteva Agriscience and its affiliated companies.

LandVisor® Advanced Brush Management is not available in all states. Always read and follow label directions. ©2024 Corteva. RP - LV - 20040 COR (06/24)

