



First line of defense against early-season insect pests:

- Armyworm
- Cutworm
- Grasshopper
- Pea leaf weevil
- Seedcorn maggot
- Wireworm

Key Benefits

- Extensive protection of the seed, roots and seedling above ground due to its unique approach that involves systematic uptake and translocation
- Easy to apply for on-farm or retail treating
- The first insecticide seed treatment to use chlorantraniliprole, an anthranilic diamide chemistry (IRAC Group 28)
- Fast-acting protection of seed and seedlings with fast-acting properties
- Minimal impact on beneficial insects and pollinators, making it a great fit for an Integrated Pest Management strategy
- May be mixed with other insecticides for multiple modes of action and an increased pest spectrum

Win The Start With Broad Protection

Lumivia[®] CPL insecticide seed treatment provides a new mode of action for early season control of pests in cereals, peas and lentils. This unique systemic chemistry doesn't just protect the seed, it also moves within the roots and the seedling above ground to protect against damaging insects.

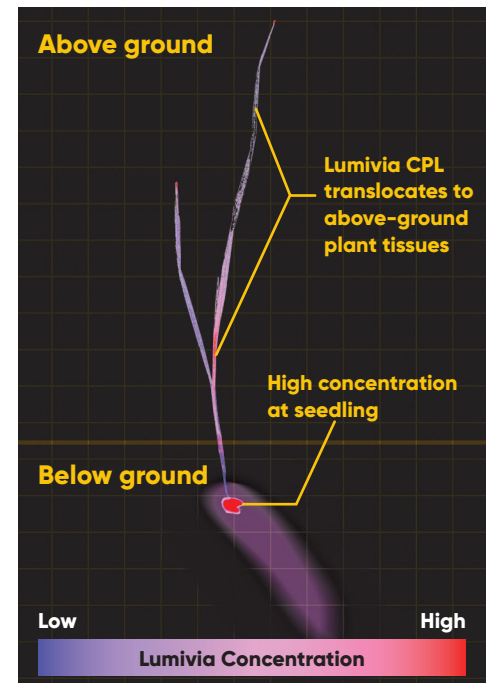
Absorption and Translocation

Chlorantraniliprole is soluble in water, but less water soluble than neonicotinoids, a common insecticide seed treatment for feeding pests. This ensures consistent, systemic movement throughout the plant. When applied as a seed treatment, Lumivia CPL protects the seed, as well as the roots and the developing seedling's stem and leaves.

Translocation:



Wheat

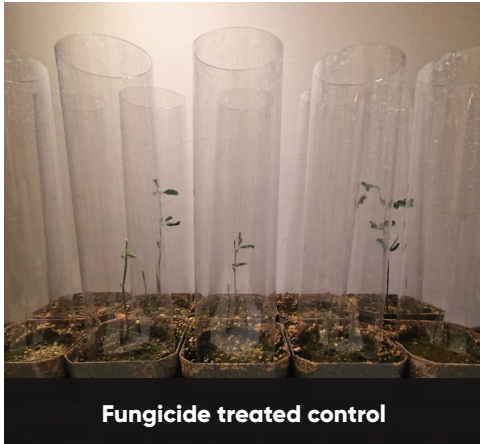


A phosphor image of the same plant showing high movement of chlorantraniliprole from regions of high concentration at the seed (red) into the root zone and into above-ground tissues.

Powerful New Mode of Action To Win The Start

Lumivia® CPL insecticide seed treatment provides early-season protection for seeds and roots below ground from pests, such as wireworm, seedcorn maggot, and pea leaf weevil larvae. Above-ground, seedlings are protected from pests such as armyworm and cutworm larvae. As chewing insects attack establishing seedlings, Lumivia CPL impairs their muscle function, paralyzing the insect which causes them to stop feeding almost immediately.

Lumivia® CPL insecticide seed treatment efficacy against black cutworm on lentils | 16 Days After Infestation



Fungicide treated control



Imidacloprid
1.6 fl oz/cwt (Competitor Check)



Lumivia CPL
0.75 fl oz/cwt

With Lumivia CPL seed treatment protection in place, growers can improve uniform plant stand and higher yield potential.

Crop Protection

Protection of pulse crops with high seedcorn maggot pressure | Seedcorn maggot trial results | Pasco, Washington (2022)



Fungicide treatment only



Lumivia CPL



Fungicide treatment only



Lumivia CPL

In both crops, seeds treated with Lumivia CPL demonstrate healthier and more robust stands.

For more information on Lumivia® CPL insecticide seed treatment, please contact your local Corteva Agriscience territory manager or call **800-258-3033**.

