

Enversa™

HERBICIDE

Proprietary formulation with effective weed control & excellent crop safety

Features

- Proprietary acetochlor (Group 15) formulation for residual control of tough to control weeds
- Versatility in application timing
- Drives to the soil from the leaf surface with proprietary encapsulation, creating strong residual control
- Encapsulated acetochlor for excellent crop safety
- Great handling and tank-mix compatibility

Benefits

- Residual control of 20 broadleaf weeds and grasses, including Palmer amaranth and waterhemp
- Reliable product and performance leads to con idence in resistance management
- Fits perfectly into a herbicide program approach with other Corteva Agriscience™ soybean herbicides such as Sonic®, Trivence® and Enlist® One herbicides
- Excellent crop safety leads to higher yield potential
- Wide window of application to help navigate challenging weather conditions

Enversa™ herbicide is an encapsulated Group 15 residual herbicide with a proprietary formulation, pending regulatory approval, that provides powerful control of 20 of the toughest broadleaf and grass weeds. Enversa is designed to drive to the soil and provide lasting residual control.

Enversa is a new solution in the Corteva Agriscience portfolio for residual control on broadleaf and grass weeds. In addition to strong broad-spectrum weed control, Enversa will offer farmers versatility to use in multiple crops and is a great tank mix option as part of a program approach to resistance management. Enversa is the preferred residual tank-mix partner with Enlist® One herbicide. Farmers will have a wide application window to apply Enversa, giving them application timing flexibility. The excellent crop safety in Enversa will help optimize yield potential, while delivering outstanding tank-mix compatibility.

Application recommendations (pending regulatory approval)

Application rate: 3 pts/A

Spray application volume:

Postemergence: 10–30 gal/A

Proposed application timing:

Corn: postemergence up to 30 inches¹

Cotton: preplant up to first bloom

Sorghum: preplant up to 11"

Soybean: preplant up to R2

¹ Can be used preplant in labeled states

- For use on corn (field, production seed, silage and popcorn), cotton, peanuts, sorghum, soybeans and sugar beets
- DO NOT exceed a total of 3 applications of Enversa per season
- DO NOT exceed a total of 4 qts/A of Enversa herbicide per season when making multiple applications

Crop rotation interval

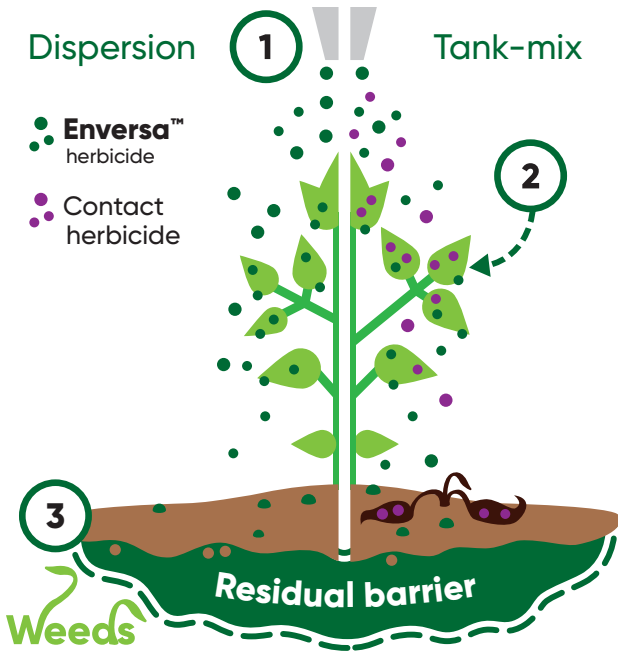
Crop	Use Rate: ≤ 3 pt/A
Corn <i>(field, production seed, silage and popcorn)</i>	Anytime
Cotton	Anytime
Peanuts	Anytime
Sorghum ²	Anytime
Soybeans	Anytime
Sugar beets	Next Spring

² When replanting milo (sorghum) use only seed properly treated with seed protectant or safener.

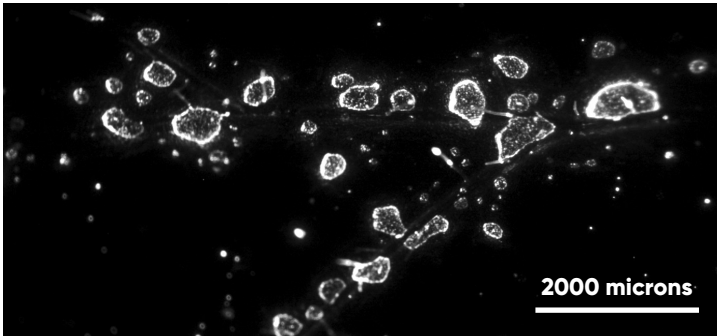
Weed control (pre or postemergence applications)

C – Controlled PC – Reduced competition

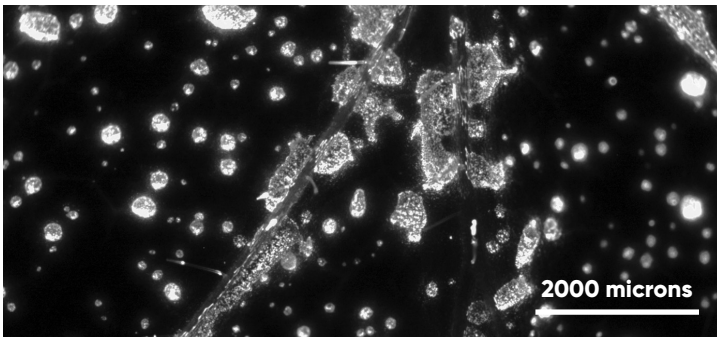
Grasses			
C Barnyardgrass	C Goosegrass	PC Panicum <i>(Texas)</i>	C Sprangletop <i>(red)</i>
C Crabgrass	PC Johnsongrass <i>(seedling)</i>	C Rice <i>(red)</i>	PC Wheat <i>(volunteer)</i>
C Crowfootgrass	PC Millet <i>(foxtail)</i>	PC Sandbur <i>(Grassbur)</i>	C Witchgrass
C Cupgrass <i>(prairie)</i>	PC Oat <i>(wild)</i>	PC Shattercane <i>(Wild cane)</i>	
C Foxtail <i>(giant, green robust purple, robust white, yellow)</i>	C Panicum <i>(browntop, fall)</i>	C Signalgrass <i>(broadleaf)</i>	
Broadleaves			
PC Beggarweed <i>(Florida)</i>	C Henbit	C Purslane	PC Starbur <i>(bristly)</i>
C Carpetweed	C Lambsquarters	C Pusley <i>(Florida)</i>	C Waterhemp
C Galinsoga	C Nightshade <i>(black, hairy)</i>	PC Sida <i>(prickly; Teaweed)</i>	
PC Groundcherry <i>(cutleaf)</i>	C Pigweed <i>(Amaranthus spp.)</i>	PC Smartweed	



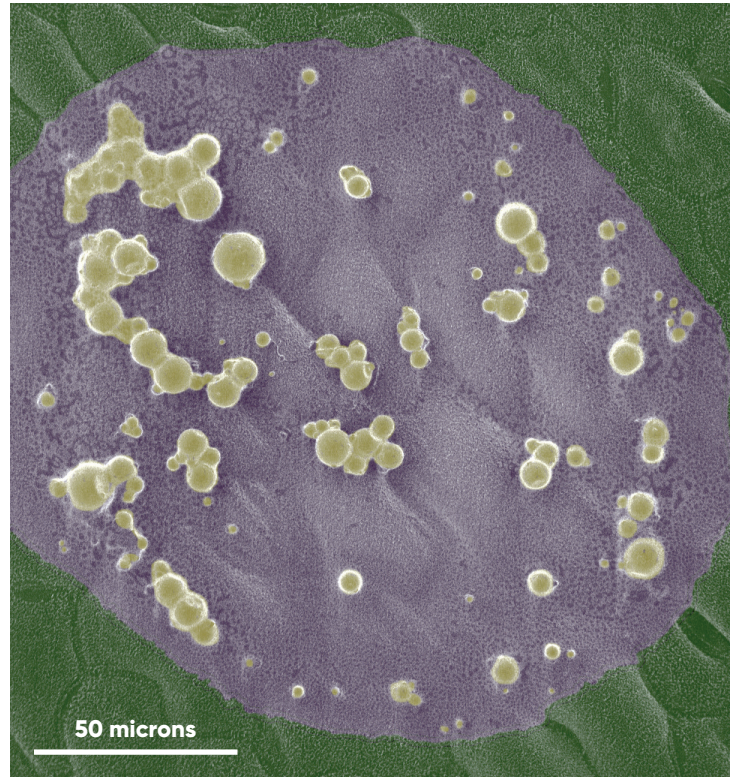
- 1 Leaf is sprayed with Enversa™ herbicide alone (left) or combination with a tank-mix product (right)
- 2 Droplets on the leaf hold tank-mixed product and Enversa
- 3 Enversa microcapsules move from the leaf surface & drives to the soil, resulting in a residual barrier around the plant



Spray droplets of Enversa showing only minor amount of solution retained on leaf surface demonstrating the formulation driving to the soil.



Spray droplets of tank mix of Enversa and glyphosate showing more spray droplets staying on the leaf with the tank-mix vs Enversa alone (image above).



High magnification of an individual spray droplet residue of Enversa + glyphosate solution on leaf surface.

- Enversa micro-capsules
- Glyphosate solution
- Leaf surface

Visit us at corteva.us



©™ Trademarks of Corteva Agriscience and its affiliated companies.

Enversa™ herbicide has not yet received regulatory approval; approvals are pending. The information provided here is not an offer for sale. This reference guide is not intended as a substitute for the product label for the product(s) referenced herein. Product labels for the above product(s) contain important precautions, directions for use, and product warranty and liability limitations, which must be read before using the product(s). Applicators must be in possession of the product label(s) at the time of application. Always read and follow all label direction and precautions for use when using any pesticide alone or in tank-mix combinations. Not all products are registered for sale or use in all states. Contact your state pesticide regulatory agency to determine if a product is registered for sale or use in your state. Always read and follow label directions. ©2023 Corteva. COR (02/23)